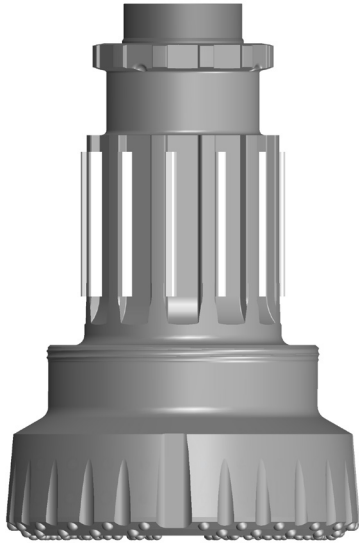






# Down Hole Button Bits

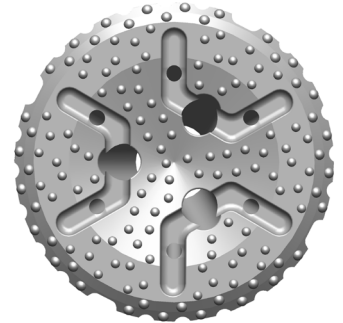
## Champion® RC210



RC210 Bit Shank

DIAMETER		WEIGHT*	
inches (millimeters)		pounds (kilograms)	
21"	(533 mm)	1650 lbs.	(748 kg)
22"	(559 mm)	1740 lbs.	(789 kg)
24"	(610 mm)	1910 lbs.	(866 kg)
26"	(660 mm)	2060 lbs.	(934 kg)
28"	(711 mm)	2200 lbs.	(998 kg)

## FACES AVAILABLE



Concave

\* Bit weights are approximate

## FEATURES

- Concave face design for advanced hole cleaning capabilities
- 3/4" (19 mm), 7/8" (22 mm) and 1" (25 mm) carbide options available
- Significantly larger spline area for exceptional strength and transfer of torque
- Plate drive system for increased spline life
- Side wear buttons are optional on all bits
- Several grades and types of carbide are available
- Other bit sizes may be available upon request

### For More Information Contact:

646 Thompson Road • Thompson, CT 06277 USA  
 Phone: (860) 923-9551 • Fax: (860) 923-2617  
 numa@numahammers.com • www.numahammers.com

